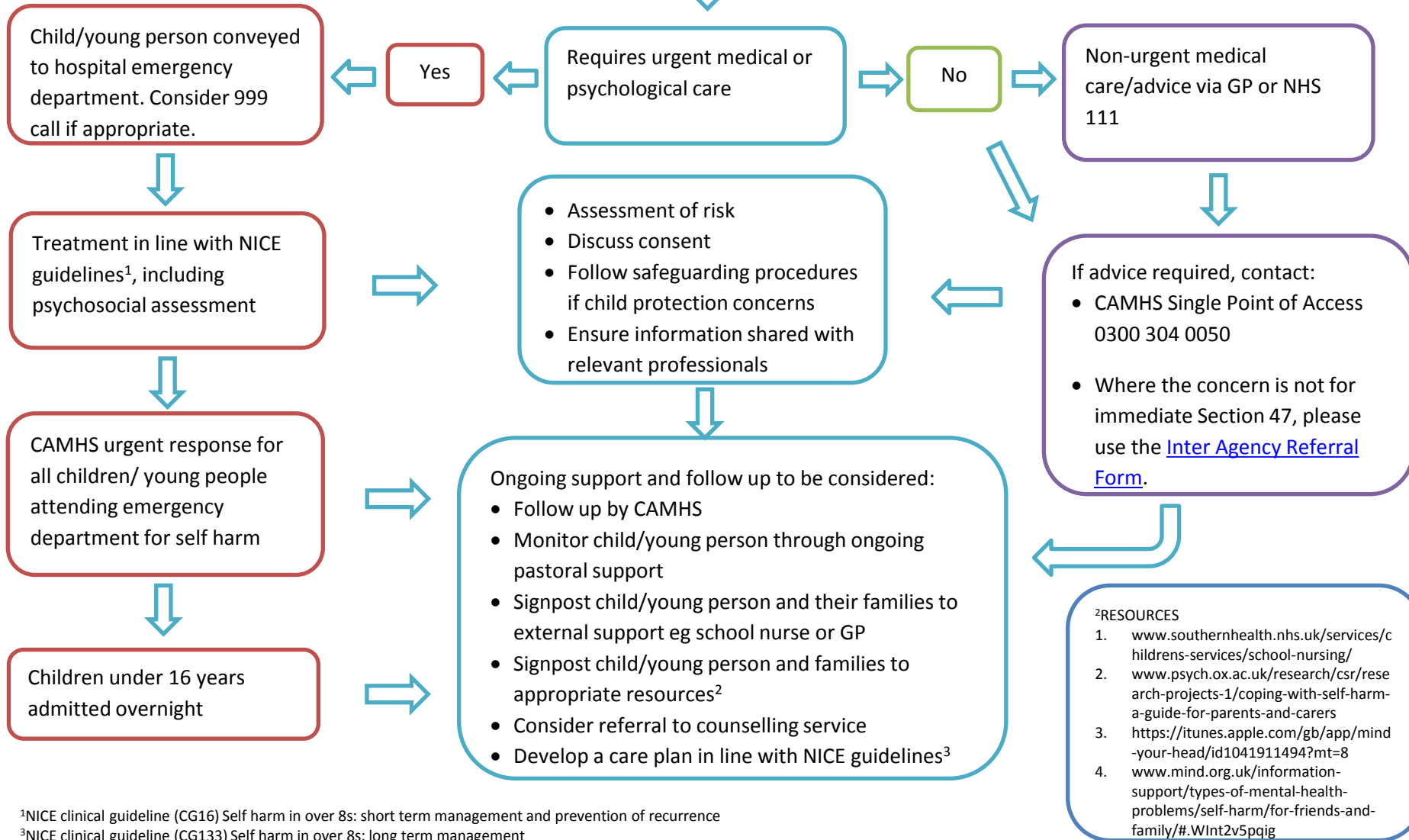


Multi-agency self harm pathway for professionals (April 2017)

Self harm is defined for this pathway as 'self poisoning or self injury, irrespective of the apparent purpose of the act'¹

A child or young person is self harming or tells you that they have self harmed



¹NICE clinical guideline (CG16) Self harm in over 8s: short term management and prevention of recurrence

³NICE clinical guideline (CG133) Self harm in over 8s: long term management